



Galaxy Crane System Accessories



counterweight bucket for 45 weights



The compact counterweight bucket can be used for shorter crane versions. It gives better visibility to the front and it is more handy for transport and set up due to less weight and smaller dimensions.

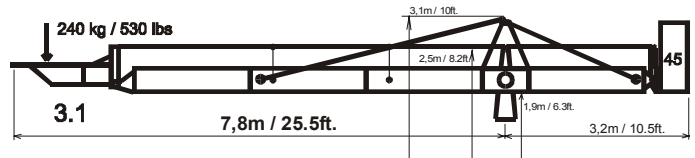
Compared dimensions:

left: Counterweight Bucket for 80 weights
Measurements: l 42 x w 73 x h 118 cm

right: Counterweight Bucket for 45 weights
Measurements: l 42 x w 56 x h 93 cm

The counterweight bucket for 45 weights is suitable for the Galaxy crane up to the version 5 remote or version 3.1 platform.

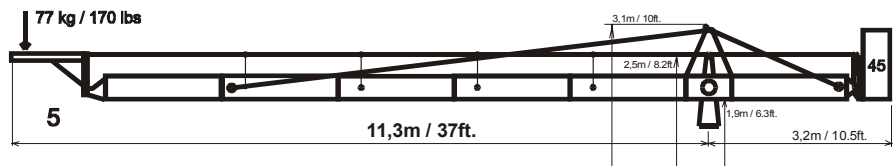
Also longer crane versions can be equipped with reduced payload on the platform/remote mount.



max. Höhe/ height: 10,5m/34 ft.

min. Höhe/ height: -6,5m/-21.5 ft.

Base Dolly: Mammoth Base



Trapezoid compact

The compact trapezoid can be used for shorter crane versions (up to remote version 5 or platform version 3.1). It gives better visibility to the front and it is more handy for operation (especially in studios) and set up due to smaller dimensions.

Compared dimensions:

Left: Trapezoid (standard)
measurements:
l 71 x w 123 x h 94 cm

right: Trapezoid (compact)
Measurements:
l 71 x w 78 x h 58 cm

149940	Counter weight Bucket (45 weights) Gewichtskorb (45 Gewichte)	
150000	Handle frame for Counterweight bucket (45 weights) Schwenkbügel für Gewichtskorb (45 Gewichte)	
150023	Trapezoid, compact Trapez, compact	
150066	Anchor Pole compact,variable, back Abspannung compact, variabel, hinten	
150024	Anchor Pole compact,variable, back short Abspannung compact, variabel, hinten kurz	
150030	Base Anchor Pole, compact Basis Abspannung, compact	